

PCA with BCP (Bromocresol Purple)



Medium used for the cultivation and enumeration of *Lactobacilli* in milk and dairy products.

* Equally use with MFDS (MB-P1601K).

• CONTENTS (Liter)

Peptone	5.0 g
Yeast Extract	2.5 g
Dextrose	1.0 g
Tween 80	1.0 g
L-Cysteine	0.1 g
Bromocresol Purple	0.05 g
Agar	15.0 g
Final pH = 6.8 ± 0.2 at 25°C	

• PROCEDURE

Suspend 24.65 G of powder to 1 L of distilled or deionized water. Heat to boiling until completely dissolved. Sterilize by autoclave at 121°C for 15 minutes. Cool to 45 - 50°C in water bath. Mix well. Pour into petri dishes.

• INTERPRETATION

PCA with BCP (Bromocresol Purple) is a medium used for the cultivation and enumeration of *Lactobacilli* in milk and dairy products. Peptone and yeast extract provide nitrogen, carbon, vitamins and minerals. Dextrose is the carbohydrate. Tween 80 and L-cysteine provide the growth factors for the growth of *Lactobacilli*. Bromocresol purple is the pH indicator. Agar is the solidifying agent.

• TECHNIC

Inoculate the specimen using a sterile loop to the medium. Incubate at 35 - 37°C for 48 - 72 ± 3 hours. Refer appropriate references for recommended test procedure.

• QUALITY CONTROL FOR USE

Dehydrated medium

Appearance: free-flowing, homogeneous

Color: light green

Prepared medium

Appearance: slightly opalescent

Color: purple

Incubation conditions: 35 - 37°C / 48 - 72 ± 3 hours

Microorganism	ATCC	Inoculum CFU	Growth
<i>Lactobacillus acidophilus</i>	4356	50-100	good
<i>Lactobacillus bulgaricus</i>	11842	50-100	good

• STORE

The powder is very hygroscopic. Store the powder at room temperature, in a dry environment, in its original container tightly closed and use it before the expiry date on the label. Store prepared medium at 2 - 8°C.

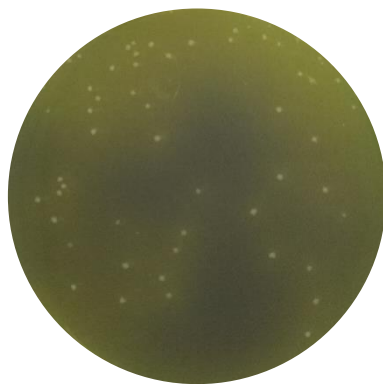
• REFERENCES

1. Downes F. P. and Ito K., (Eds.), 2001, Compendium of Methods for the Microbiological Examination of Foods, 4th Ed., APHA, Washington, D.C.
2. Refer to the MFDS.

• PACKAGE

Cat. No : MB-P1601 PCA with BCP (Bromocresol Purple)	500 G
---	-------

• MICROBIAL CULTURE IMAGES



Lactobacillus bulgaricus ATCC 11842 (<100CFU)

Incubation conditions : 35 - 37°C / 48 - 72 ± 3 hours